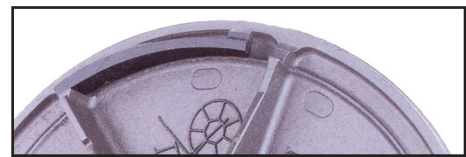


REXEL -Normal traffic

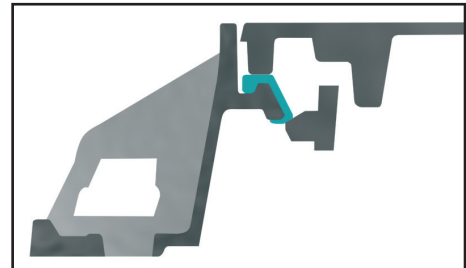
- Ductile iron
- Class D 400
- Automatic locking by ductile iron spring bar (patented system)
- Optional anti-theft cover lock
- Hinge
- Unlocking box
- EN 124



A



E



F



G



B



C



D

CAPTIONS :

Photo A : opening to 130°, cover with seven-sided pot and reminder of site safety instructions.

Photo B : quick, simple releasing without requiring accessories.

Photo C : press-down central key way for lifting with crowbar, optional plastic plug available.

Photo D : reliable locking in all circumstances.

Photo E : spring locking bar integrated in cover.

Photo F : the spring locking bar is compressed under the cover plate.

Photo G : easy opening hinge, green sound-proofing ring for stability and silence.

REXEL -Normal traffic

THE BEST OF EXPERIENCE

Representing a new generation of carriageways manhole covers, REXEL combines the innovation of its spring locking mechanism requiring no accessories with easy opening, stability, safety and silence.

STRENGTH +++

The completely new design of REXEL gives a double guarantee of performance and long service life.

Optimized geometry of the cover : rigidity and strength to withstand the stress of usual carriageway's traffic.

Fully mastered frame profiles : perfect seating on shafts, effective and durable bedding.

STABILITY +++

The spring locking mechanism provides REXEL with remarkable dynamic stability :

3 contact points : the hinge, the locking mechanism and the ring ensure vertical stability of the cover in the frame.

Permanent contact between the locking mechanism and the cover positioning lugs ensure horizontal stability.

The locking mechanism keeps the cover held against the sound-proofing ring : the cover is prevented from rocking and complete silence is ensured.

OPERATION +++

- Easy opening : using suggested tools, a lever effect in the handling box frees the spring locking mechanism and releases the manhole cover.

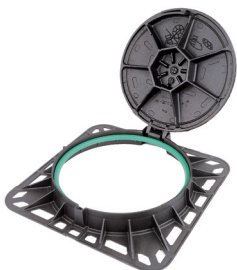
- Easy lifting once unlocked : the hinge reduces the force required to open the cover by half. For completely ergonomic handling, the central pad in the cover can be pushed in, and reclosed using the special plug (optional).

- Easy locking when closing : the cover can be locked without requiring any accessories, by simply pressing with the foot. If it is left unlocked, REXEL is locked automatically as soon as the first vehicle crosses it.

THE REXEL RANGE

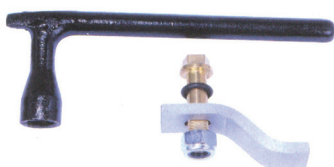


ROUND FRAME	References	Mass (in kg)		Dimensions mm	
		Total	Cover	Clear opening	Frame depth
		Non-ventilated	CDRX60AF	57	32
Ventilated	CDRX60BF	56	31		



SQUARE FRAME	References	Mass (in kg)		Dimensions mm	
		Total	Cover	Clear opening	Frame depth
		Non-ventilated	CDRX60KF	65	32
Ventilated	CDRX60LF	64	31		

Blanking plastic plug, for push-in central pad : C19



KIT "PENTA" FOR REXEL

Model	Reference
Kit without handling key	C9
Handling key	C17

KIT "SCS" FOR REXEL

Model	Reference
Kit without handling key	C11
Handling key	C18