

PAMREX

INTENSE TRAFFIC

- Ductile iron
- Class D400 for heavy traffic
- Hinged
- Elastomer ring
- Sealed handling box
- Optional anti-theft cover lock
- Lifting rings integral with the frame



ERGONOMICS- NEW HANDLING BOX

Raising the PAMREX cover to make a visual inspection while standing is effortless: place a crowbar at 35° in the brand new handling box insertion point and nothing could be easier. Conventional means of opening are also possible.



HIGH RESISTANCE TO TRAFFIC, ENHANCED ERGONOMIC DESIGN

Designed to cope with the heaviest traffic but quiet thanks to its elastomer seal, PAMREX is a reliable manhole that has withstood the test of time. PAMREX's new enhanced ergonomics now make it even easier to carry out works on systems while also improving operator safety. In hundreds of towns and cities, even after millions of vehicles have driven over it, PAMREX continues to demonstrate its qualities of endurance and reliability.

STRENGTH ++++

PAMREX has a high safety factor with a breaking strength margin well above the requirements of EN 124.

Designed to withstand the stresses of intense traffic, in terms of large numbers of vehicles, regular use by very heavy vehicles and high speeds, PAMREX is the absolute reference in terms of performance and durability in France and Europe.

STABILITY ++++

PAMREX is silent : there is no metal to metal contact. Its frame is fitted with an elastomer ring which ensures :

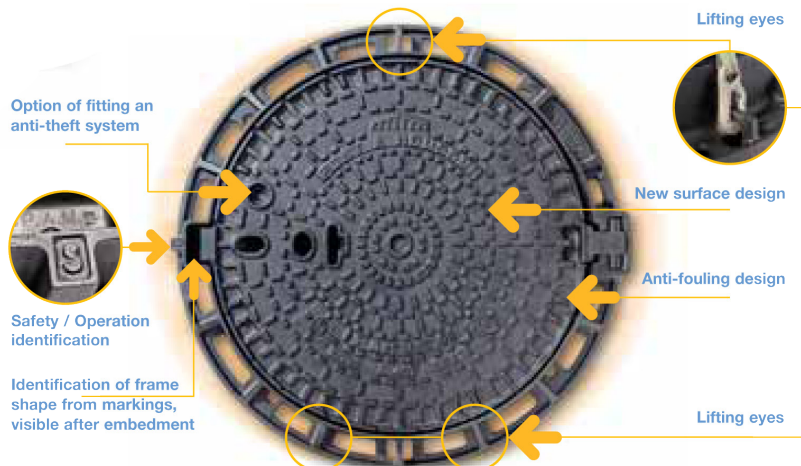
- Damping of mechanical stresses caused by the repeated passage of vehicles.
- Self-centering and stability of the cover : the ring pinches the lower skirt and works against the suction phenomenon caused by vehicles' tyres.

OPERATION ++++

The PAMREX hinge ensures easy opening and operating safety : The PAMREX hinge does not come into contact with the frame when the cover is closed and it is, therefore, not subjected to traffic stresses. It is only placed under stress during opening and closing operations, in the event of the sewer system being accidentally pressurized, the PAMREX cover opens without coming out of its housing and recloses under its own weight.



The "extras that make life easier"





Easy installation: A manhole cover designed to match perfectly into its environment.

THE PAMREX RANGE



PAMREX SAFETY
Opens to 130°, blocks at 90° when closing for sewage pipeworks

Type	Frame	Reference	Mass (in kg)		Dimensions mm	
			Total	Cover	Ø	H
Non-ventilated	Round	CDPA60EF	88	55	610	100
Non-ventilated	Square	CDPA60MF	97	55	610	100
Ventilated	Round	CDPA60FF	87	54	610	100
Ventilated	Square	CDPA60PF	96	54	610	100



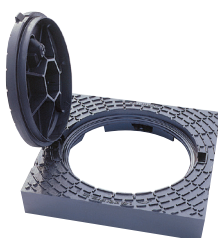
PAMREX OPERATION
Opens to 130°, without blocking at 90° when closing for pipework inspection from road surface

Type	Frame	Reference	Mass (in kg)		Dimensions mm	
			Total	Cover	Ø	H
Non-ventilated	Round	CDPA60AF	88	55	610	100
Non-ventilated	Square	CDPA60KF	97	55	610	100
Ventilated	Round	CDPA60BF	87	54	610	100
Ventilated	Square	CDPA60LF	96	54	610	100



PAMREX SAFETY WITH CONCRETE INFILLED COVER
Opens to 130°, blocks at 90° when closing for sewage pipeworks cover appearance matches paved surrounding areas operation conditions identical to any other PAMREX versions

Type	Frame	Reference	Mass (in kg)		Dimensions mm	
			Total	Cover	Ø	H
Non-ventilated	Round	CDPA60GL	108	75	610	100
Non-ventilated	Square	CDPA60WF	117	75	610	100



PAMREX WITH APPARENT FRAME
Frame designed for easy cobble and paving installation, (height= 160 mm) for paved and pedestrian streets

Type	Frame	Reference	Mass (in kg)		Dimensions mm	
			Total	Cover	Ø	H
Non-ventilated	Apparent	CDPA603F	132	55	610	160
Ventilated	Apparent	CDPA604F	131	54	610	160

- The PAMREX grating is interchangeable with any cover of PAMREX 600 series
- The PAMREX grating is interchangeable with the cover.
- Special versions of PAMREX fitted with a water-tightness plug are also available. Please consult PAMREX accessories.

PAMREX

INTENSE TRAFFIC

PAMREX 700 SAFETY



- Ductile iron
- Class D400 heavy traffic
- Hinged
- Clear opening: 700 mm
- Elastomer ring
- Sealed handling box
- Optional anti-theft cover lock
- Lifting rings integral with frame
- EN124



PAMREX 700 has the same functional features as PAMREX 600 (see pages A.12 and A.13). Access is made through a wide 700-mm opening specifically designed for systems requiring special safety conditions for operators.

Type	Frame	Reference	Mass (in kg)		Dimensions mm	
			Total	Cover	Ø	H
Non-ventilated	Round	CDPA70EF	108	71	700	100
Non-ventilated	Square	CDPA70MF	118	71	700	100
Ventilated	Round	CDPA70FF	108	71	700	100
Ventilated	Square	CDPA70PF	118	71	700	100

PAMREX 800 SAFETY

- Ductile iron
- Class D 400 heavy traffic
- Clear opening : 800 mm
- Opens to 130°, blocks at 90° when closing
- Elastomer ring
- Sealed handling box
- Optional anti-theft cover lock
- Lifting rings integral with frame
- EN 124



Pamrex 800 provides easy opening, while continuing to offer the high performance levels of the successful Pamrex 600 mm and 700 mm clear opening designs.

The 800 mm clear opening enables maintenance personnel to enter the manhole with their safety equipment, or to lower bulky equipment into the below ground network.

Type	Frame	Reference	Mass (in kg)		Dimensions mm	
			Total	Cover	Ø	H
Non-ventilated	Round	CDPA80EF	121	73	800	125
Non-ventilated	Square	CDPA80MF	131	73	800	125
Ventilated	Round	CDPA80FF	121	72	800	125
Ventilated	Square	CDPA80PF	131	72	800	125

PAMREX

INTENSE TRAFFIC

PAMREX 800 SAFETY

With opening assisted - closing with SCS locking kit (key not-provided)

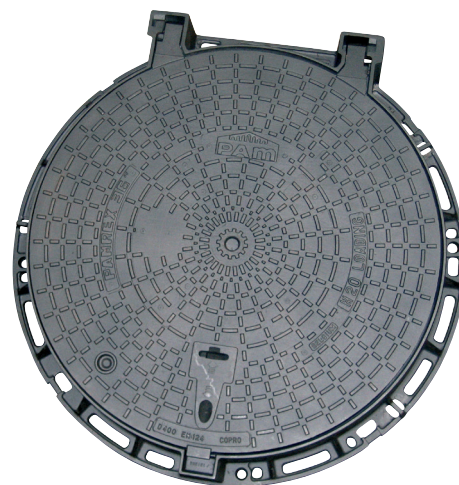
This version has the same features as the PAMREX 800 standard version. The lifting effort and the stresses transmitted to the chamber are reduced with the assistance of its stainless steel gas arm. This product is systematically fitted with a SCS locking system.

Type	Frame	Reference	Mass (in kg)		Dimensions mm	
			Total	Cover	Ø	H
Non-ventilated	Round	CDPA80EFX37	121	73	800	125
Non-ventilated	Square	CDPA80MFX37	131	73	800	125
Ventilated	Round	CDPA80FFX37	121	73	800	125
Ventilated	Square	CDPA80PFX37	131	73	800	125



PAMREX 900 - SAFETY WITH GAS STRUT ASSISTANCE

- Ductile Iron
- Clear opening
- Dual hinged
- 90° blocking system to prevent accidental closure
- Certified to ISO9000:2000
- Includes hinge infiltration plugs & gas strut to aid opening and closure



Type	Frame	Reference	Mass (in kg)		Dimensions mm	
			Total	Cover	Ø	H
Non-ventilated	Round	CDPA90EH	178	93	900	150

GALVANISED STEEL MUDPAN FOR PAMREX

- Designed for ventilated covers and grating
- 4 suspension legs rest on elastomer ring
- High resistance to load of sand and mud
- Mudpans do not impair manhole covers or gratings normal functioning.

Model	Reference
Steel mudpan for cover and grating Pamrex 600	C1
Steel mudpan for Pamrex 700	C2
Steel mudpan for Pamrex 800	C3

