

ROAD GULLY:
STANDaRD



ROAD GULLY:
LONGITUDINAL
DRAINAGE



ROAD GULLY:
WET SLUDGE TRAP

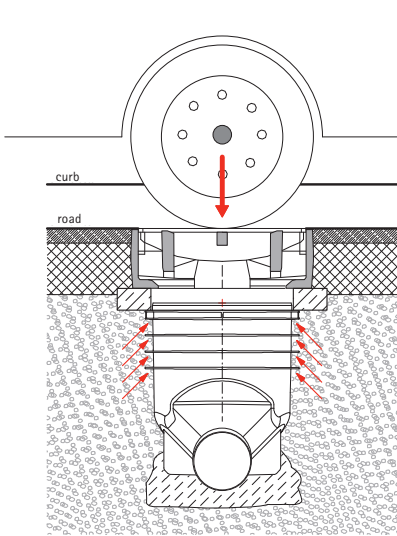


ROAD GULLY:
STENCH TRAP



ROAD GULLIES

SOLUTIONS FOR ALL APPLICATION AREAS



DETAILS WHICH MAKE THE DIFFERENCE

- Direct load-distribution into the base layer of road - no site concrete reinforcement required for surrounding the near surface components.
- Adjustable height
- all road gullies provide additional pipe connections at site.
- Fits to standard near surface components up to cl. D.

ROMOLD ROAD GULLIES: THE TOP ACHIEVERS* WITH THE DEALERS

MORE THAN 100.000 - TO DATE

WIDEST RANGE OF PRODUCTION - GRI, GR, GRT, GS

WIDEST RANGE OF CONNECTION - SOCKET ENDED PIPES & WELDED CONNECTIONS

ROMOLD ROAD GULLIES: THE FAVORITES* OF LOCAL COMMUNITIES

15 YEARS OF EXPERIENCE - WITH ROAD GULLIES

NO FROST DAMAGE - USING HYDROPHOBIC MATERIAL

NO LEAKS IN THE PIPE CONNECTION - USING SPIGOT-SOCKET CONNECTION

NO COMPONENT SINKAGE - USING THE VERY LATEST IN RIB TECHNOLOGY

LOW INSTALLATION COSTS - USING THE MONOLITHIC DESIGN

NO REPAIR COSTS - THANKS TO MORTAR FREE INSTALLATION AND LOAD DISTRIBUTION

ROMOLD ROAD GULLIES: A REAL HIT* AT THE BUILD SITE

NO CONCRET BACKFILLING OF RIPS - SAVES TIME AND MONEY

MINIMAL INSTALLATION TIME - REDUCED TO THE MAX

INNOVATION MEETS INDUSTRY STANDARD - SET UP BASED ON INDUSTRY STANDARD TO CL. D

INSPIRING DETAILS



All ROMOLD road gullies (GRI, GR, GS, GRT) are shortable.



All ROMOLD road gullies, GRI, GR, GS, GRT are individually drill-capable (sealed pipe connection, with ROMOLD seal typ IS is possible)



Suitable for all ROMOLD road gullies. Support ring made of plastic, break-proof and direct attachable, no mortar bed necessary

ROMOLD ROAD GULLIES: THE ORIGINAL AT THE BEST PRICE

IMPORTANT INFORMATION

ROMOLD road gullies are suitable for public roadways and industrial applications. Traditional support rings, grates, and dirt buckets can be used. Road gullies of type GS are equipped with stretch trap (siphon), incl. separator function and optionally with splitter for cleaning option. Connections are suitable for all common plastic pipes. Other materials can be connected using adapters. The monolithic gullies are suitable for welded system solutions. Do you require products in special shapes? Let us know.



For current information on this topic, see www.romold.de under Products, Discharge systems, Road gullies

TECHNICAL DATA:

Material: homogeneous virgin material Polyethylene (PE) or Polypropylene (PP)

- only one component (with GRT + cone 50/50 or 50/30)
- pipe line can be connected or welded
- no root ingrowth
- impact-proof, break-proof
- resistant to road salt and mineral oil / chemical-resistant
- SLW 60 (KI. D 400) resilient
- load transmission via interlocking connection with road structure
- compatible with concrete support ring 10a or 10b in accordance with DIN 4052
- use of standard grating and buckets
- lifecycle: >50 years
- delivery: ready for connection, exclusive gratings and support rings



3. Min.: bedding in lean concrete mix



5. Min.: height adjustment



7. Min.: backfilling and compacting



15. Min.: assembly of grating

Version PP: for socket ended pipes

Version PE: for socket- & welded connections



GRI 40.50.50.15/45 BI

GRI 40.50.30.15/45 BI



GR 40.50.30.15/45 BI
outlet straight or 45° or
90° right/left



GR 40.50.50.15/45 BI



GR 40.50.30.15/63 BI



GR 40.50.50.15/63 BI

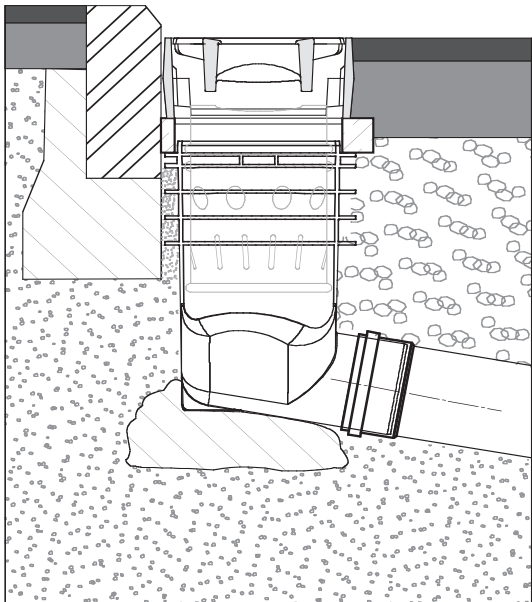
For high dirt buckets!!!

ROAD GULLIES STANDARD GRI AND GR TYPES

PUBLIC TENDER TEXT EXAMPLE

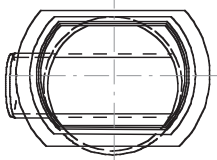
ROMOLD PP road gully ND 400, for grating 500x300 mm class C 250 or D 400 in accordance with DIN EN 124/DIN 1229, material PP, road gully made of 100% virgin material with no recycled parts or foaming agents. Outlet connection ND /OD 160 mm, inclination 10°, connection for PVC-KG pipes for DIN-compliance EN 1401 and PP pipes for DIN EN 1852 compliance, with integrated shift protection,

suitable for concrete support ring 10b for DIN 4052-3 compliance, suitable for attachment of dirt bucket form D1 for 4052-4DIN-compliance, with horizontal reinforcement rings for interlocking connection with the street structure (load transmission). Color: blue, Installation height: app. 45 cm (total height with grating: app. 65 cm), installation according to ROMOLD installation instructions.



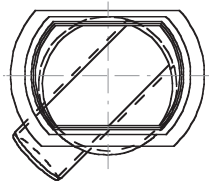
Even highways are no matter for the ROMOLD road gully.

Sidewalk



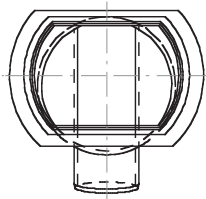
90° (90° R)

GR 40.50.30.15/45-90° BI



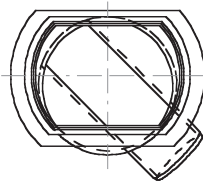
135° (45° R)

GR 40.50.30.15/45-135° BI



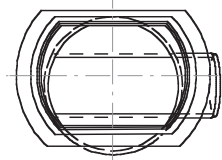
Standard

GR 40.50.30.15/45 BI



225° (45° L)

GR 40.50.30.15/45-225° BI



270° (90° L)

GR 40.50.30.15/45-270° BI



Road gully Typ GR 40.50.30

ROAD GULLY ND 400, ND 450

GRATING 500 x 500 mm bzw. 500 x 300 mm

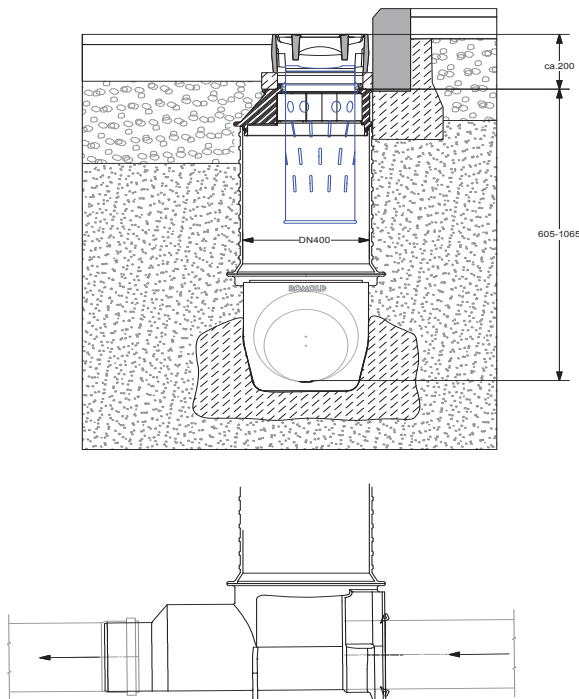
Height cm	Details	Weight kg	Article name
35 - 45	for welded systems and socket ended pipes, straight outlet, horizontal reinforcement rings, outlet connection ND /OD 160, Grating 500 x 500 mm or 500 x 300 mm	7,5	GR 40.50.30.15/45 BI GR 40.50.50.15/45 BI
53 - 63	for welded systems and socket ended pipes, straight outlet, horizontal reinforcement rings, outlet connection ND /OD 160 for high dirt bucket Grating 500 x 500 mm or 500 x 300 mm	8,6	GR 40.50.30.15/63 BI GR 40.50.50.15/63 BI
100 - 125	for welded systems and socket ended pipes, ND 450, outlet connection ND /OD 200 and 160	16,5	GR 45.20.15/125
35 - 45	for socket ended pipes material PP, straight outlet (cannot be welded to the pipe line), Grating 500 x 500 mm or 500 x 300 mm	3,6	GRI 40.50.XX.15/45 BI
35 - 45	for welded systems and socket ended pipes, with outlet 45° right, Grating 500 x 300	7,0	GR 40.50.30.15/45-135° BI
35 - 45	for welded systems and socket ended pipes, with outlet 45° left, Grating 500 x 300	7,0	GR 40.50.30.15/45-225° BI
35 - 45	for welded systems and socket ended pipes, with outlet 90° right, Grating 500 x 300	7,0	GR 40.50.30.15/45-90° BI
35 - 45	for welded systems and socket ended pipes, with outlet 90° left, Grating 500 x 300	7,0	GR 40.50.30.15/45-270° BI
ca. 16 - 24 *	Grating class C 250 or D 400, in connection with support ring 10 a or 0 b		commercial
	Dirt bucket form B1, hot-dipped, low design or A4 and A2, hot-dipped, high design or made with plastic		commercial
	Dirt bucket D1, low design or C2, C3 high design		commercial
ca. 6	Plastic support ring for road gully with grate 500 x 500 mm	13,0	PARD 50.50
ca. 6	Plastic support ring for road gully with grate 500 x 300 mm	4,1	PARD 50.30

* = Ask about our action list prices. These will vary based on order quantity.



A 9

ROAD GULLY FOR LONGITUDINAL DRAINAGE



PUBLIC TENDER TEXT EXAMPLE

ROMOLD PE road gully ND 450, for grating 300 x 500 mm class C 250 or class D 400 in accordance with DIN EN 124 / DIN 1229, material PE, made with 100% virgin material with no recycled parts or foaming agents. Resistant to aggressive wastewater, road salts and frost, consisting of bottom part (shorting dimension 460 mm) and turnable grating adapter. Bottom part with inlet option with 180° with 3-point support (self-standing), outlet connection ND /OD 315 or 250 mm, gradient app. 1%. Connection for PVC-KG pipes in accordance with DIN EN 1401, for PE pipes in accordance with DIN 8074/75 or DIN EN 12666 or PP pipes in accordance with DIN EN 1852, with horizontal ribs. Grating adapter with integrated shift protection, compatible with support ring 10b in accordance with DIN 4052-3 made of concrete or plastic, suitable for attachment of dirt bucket form D1 for DIN 4052-4-compliance. Color: black, Installation height: app. 160 cm (Overall installation height with standard grating: app. 180 cm).

ROAD GULLIE ND 450 FOR LONGITUDINAL DRAINAGE

GRATING 500 x 500 mm bzw. 500 x 300 mm

Height cm	Outlet	Details	Weight kg	Article name
60 - 105	ND/OD 315/250	Road gully ND 450 for longitudinal drainage, outlet ND /OD 315 and 250, 1° gradient, turnable Grating 500 x 500, optionally 500 x 300, with element seal, can be shortened	21,1	GRT 1B 45.50.XX.30.25/105
95 - 140			25,1	GRT 1B 45.50.XX.30.25/140
115 - 160			27,1	GRT 1B 45.50.XX.30.25/160
60 - 105	ND/OD 200/160	Road gully ND 450 for longitudinal drainage, 1° gradient, turnable Grating 500 x 500 optionally 500 x 300 with element seal, outlet ND/OD 200 and 160, 2 additional inlets ND/OD 200 and 160, can be shortened	21,6	GRT 3B 45.50.XX.20.15/105
95 - 140			25,6	GRT 3B 45.50.XX.20.15/140
115 - 160			27,6	GRT 3B 45.50.XX.20.15/160

* = Ask about our action list prices. These will vary based on order quantity.



easy handling



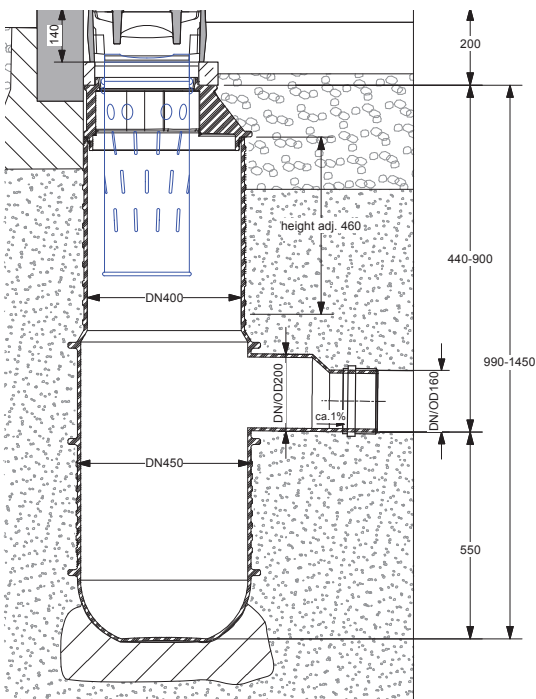
GRT 45.50.xx.15/105
height: 105 cm
sludge trap volume: 87 l

GRT 45.50.xx.20.15/145
height: 145 cm
sludge trap volume: 76 l

GRT 45.50.xx.20.15/200
height: 200 cm
sludge trap volume: 156 l

GRT E 40/55
Installation height 55 cm / Height adj. 45 cm
incl. seal

ROAD GULLEY WITH WET SLUDGE TRAP



PUBLIC TENDER TEXT EXAMPLE

ROMOLD PE road gully ND 450, for grating 500 x 500 mm class C 250 or class D 400 in accordance with DIN EN 124 / DIN 1229, material PE, made with 100% virgin material with no recycled parts or foaming agents. Resistant to aggressive wastewater, road salts and frost, consisting of bottom part (shorting dimension 460 mm) and turnable grating adapter. Bottom part: Round bottom with flat support surface (self-standing), optimized form for cleaning with suction tube, outlet connection ND /OD 200 or 160 mm, gradient app. 1%, outlet app. 55 cm above ground, storage volume app. 76 liter. Connection for PVC-KG pipes in accordance with DIN EN 1401, for PP pipe in accordance with DIN EN 1852 or for PE pipes in accordance with DIN 8074/75 or DIN EN 12666, with horizontal ribs. Grating adapter with integrated shift protection suitable for concrete support ring 10a in accordance with DIN 4052-3, suitable for attachment of dirt bucket form B1 in accordance with DIN 4052-4. Color: black, installation height: app. 145 cm (total installation height with standard grating: app. 168 cm).

ROAD GULLY ND 450 WITH WET SLUDGE TRAP

AUFSATZ 500 x 500 mm bzw. 500 x 300 mm

Height cm	Outlet	Details	Weight kg	Article name
103 - 105	ND/OD 160	For welded systems and socket ended pipes, turnable Grating 500 x 500 mm or 500 x 300 mm, outlet connection tilted by 45°	16,5	GRT 45.50.XX.15/105
			16,5	GRT 45.50.XX.15/105
100 - 145	ND/OD 200/160	For welded systems and socket ended pipes, turnable Grating 500 x 500 mm or 500 x 300 mm, can be shortened	21,5	GRT 45.50.XX.20.15/145
			21,5	GRT 45.50.XX.20.15/145
155 - 200	ND/OD 200/160	For welded systems and socket ended pipes, turnable Grating 500 x 500 mm or 500 x 300 mm, can be shortened	29,0	GRT 45.50.XX.20.15/200
			29,0	GRT 45.50.XX.20.15/200

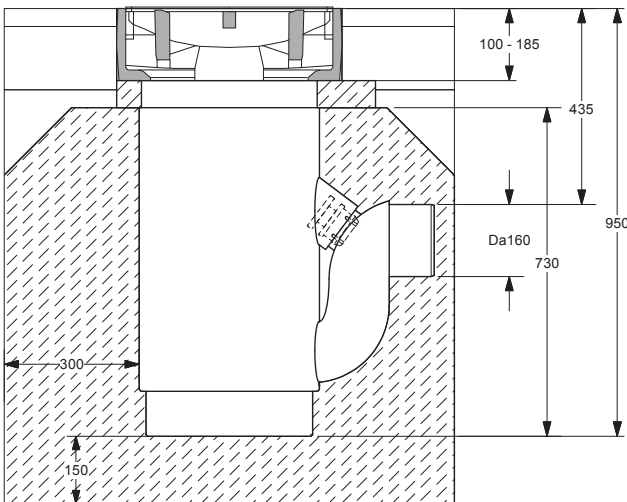
* = Ask about our action list prices. These will vary based on order quantity

WITH STENCH TRAP



Road gully type GS with stench trap in different versions (diameter and installation height). By request.

ROAD GULLY WITH STENCH TRAP



ROMOLD PE-road gully ND 400, with outlet ND 150 for grating 500 x 500, outlet connection ND /OD 160, for connection of PVC pipe in accordance with DIN EN 1401, for PP pipe in accordance with DIN EN 1852 or for PE pipe in accordance with DIN 8074/75 or DIN EN 12666. Road gully with stench trap/siphon incl. connection for camera inspection or cleaning **PUBLIC TENDER TEXT EXAMPLE** device. Connection with plug made of NBR for sealing in operating state and for extraction during cleaning and inspection procedures. Height: 73 cm

ROAD GULLY WITH STENCH TRAP

Height cm	Details	Weight kg	Article name
73	with stench siphon, for welded systems and socket ended pipes with splitter for cleaning option, outlet connection ND /OD 160 (additional versions by request)	12,5	GS 40.15/73 P

* = Ask about our action list prices. These will vary based on order quantity.